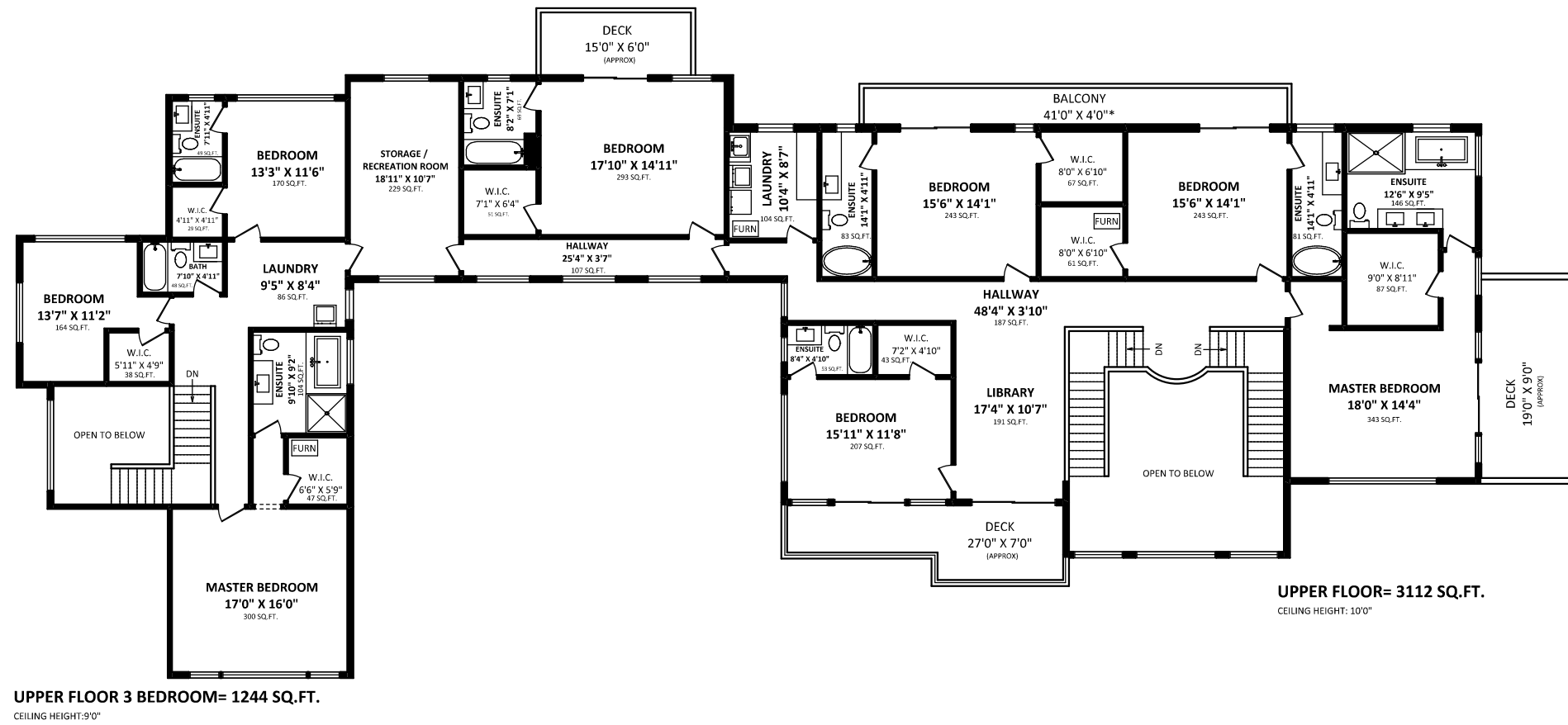


19873 McNeil Road,  
Pltt Meadows, BC



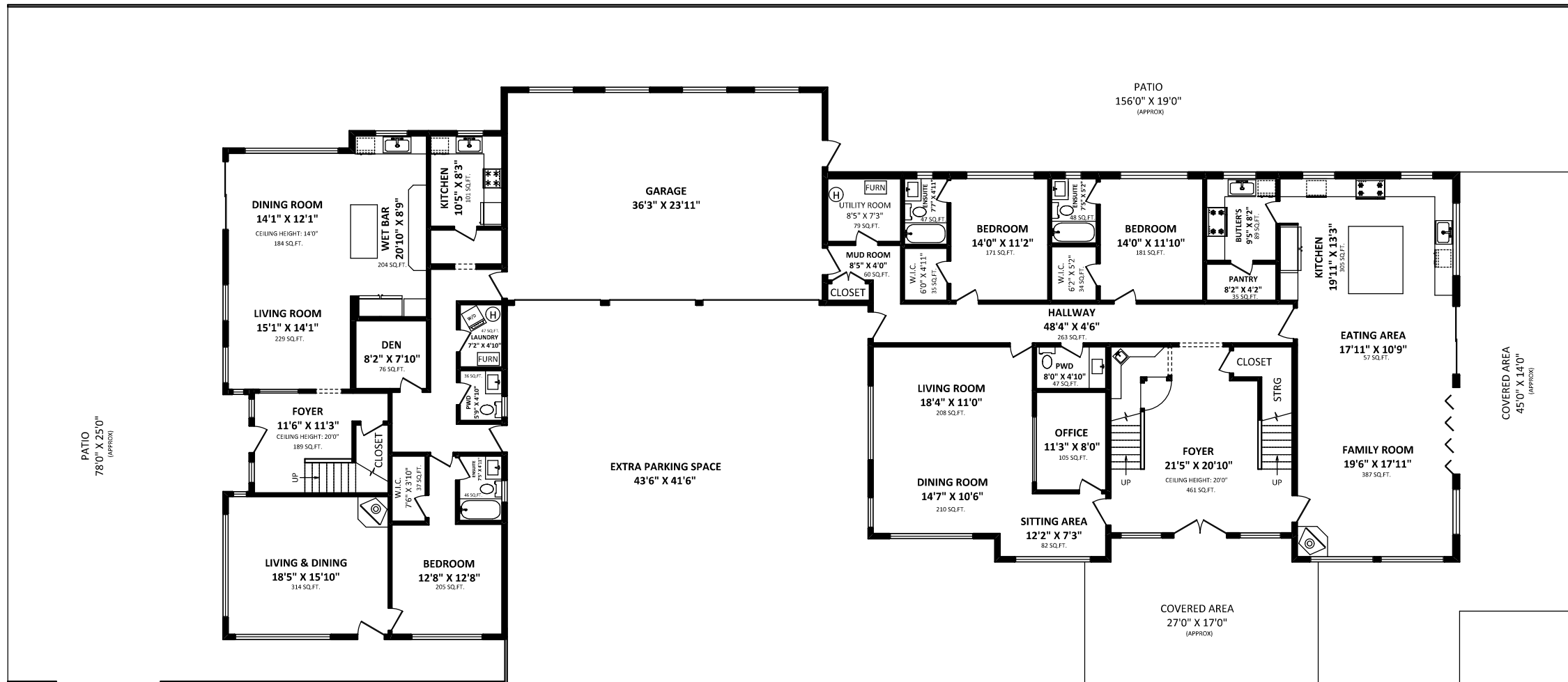
ARVIND VARMA

Sutton Group - West Coast Realty  
Cell: 604-603-7470  
Office: 604-986-9321  
arvindvarma@mac.com



UPPER FLOOR 3 BEDROOM= 1244 SQ.FT.  
CEILING HEIGHT: 9'0"

UPPER FLOOR= 3112 SQ.FT.  
CEILING HEIGHT: 10'0"



MAIN FLOOR LIVING= 805 SQ.FT.  
1 BEDROOM SUITE= 1044 SQ.FT.  
CEILING HEIGHT: 10'0"

MAIN FLOOR= 3033 SQ.FT.  
CEILING HEIGHT: 10'0"

<b>TOTAL FINISHED AREA: 9238 SQ.FT.</b>	
MAIN HOUSE:	6145 SQ.FT.
1 BEDROOM SUITE:	1044 SQ.FT.
3 BEDROOMS SUITE:	2049 SQ.FT.
<b>OTHER AREA(S)</b>	
GARAGE:	918 SQ.FT.
EXTRA PARKING SPACE:	1805 SQ.FT.
DECKS:	460 SQ.FT.*
COVERED AREA:	1049 SQ.FT.*
PATIOS:	4646 SQ.FT.*
BALCONY:	164 SQ.FT.*

DISCLAIMER:  
1. MEASUREMENTS ARE FOR PROMOTIONAL USE ONLY & ARE NOT INTENDED FOR CONSTRUCTION USE. ROOM DIMENSIONS ARE APPROXIMATE. MEASUREMENTS & CALCULATIONS FOR FINISHED AREAS ARE E&O INSURED.  
2. FINISHED AREAS ARE ENCLOSED AREAS IN A HOUSE THAT ARE SUITABLE FOR YEAR-ROUND USE. ENDOORING WALLS, FLOORS, AND CEILINGS THAT ARE SIMILAR TO THE REST OF THE HOUSE. (ANSI Z765-2013)  
3. THIS FLOOR PLAN MAY ONLY BE REPRODUCED WITH PERMISSION OF THE REALTOR(S) ON THIS FLOOR PLAN.  
\* ANY MEASUREMENT WITH AN ASTERISK (\*) OR (APPROX) ARE APPROXIMATE AND FOR ILLUSTRATION PURPOSES ONLY AND ARE NOT E&O INSURED.

NOVEMBER 14, 2018  
SEE VIRTUAL  
TEL: 604-575-1244  
www.seevirtual360.com

